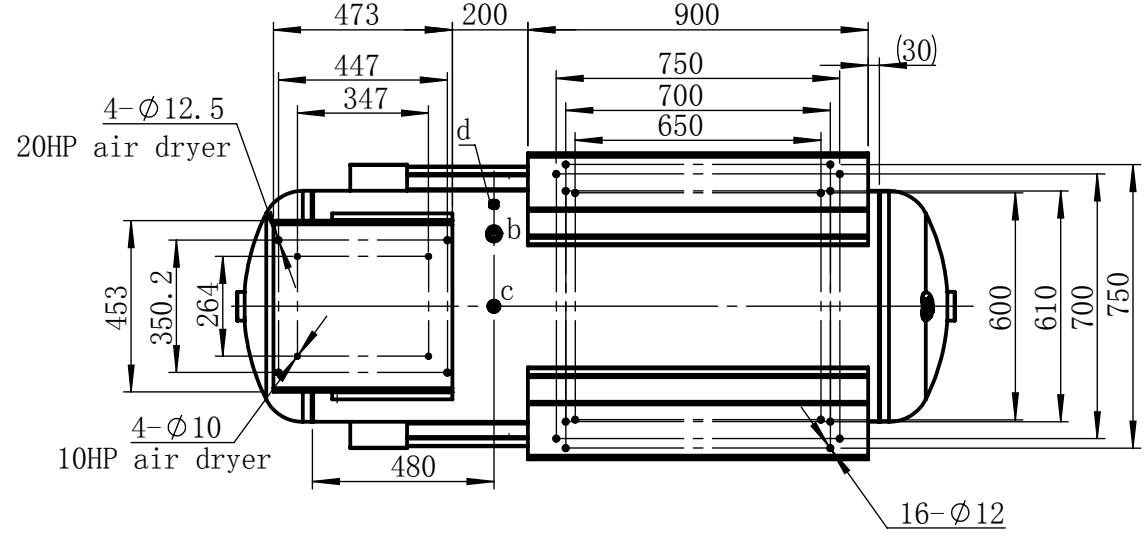
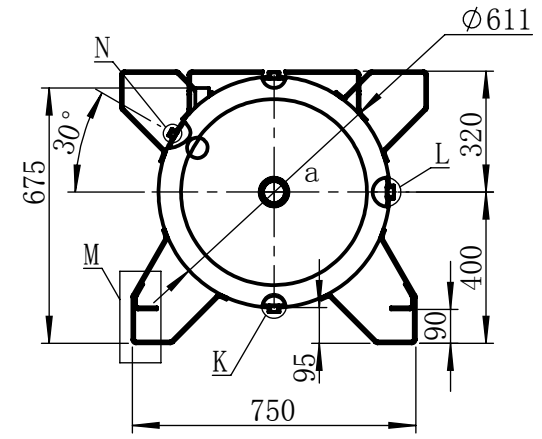
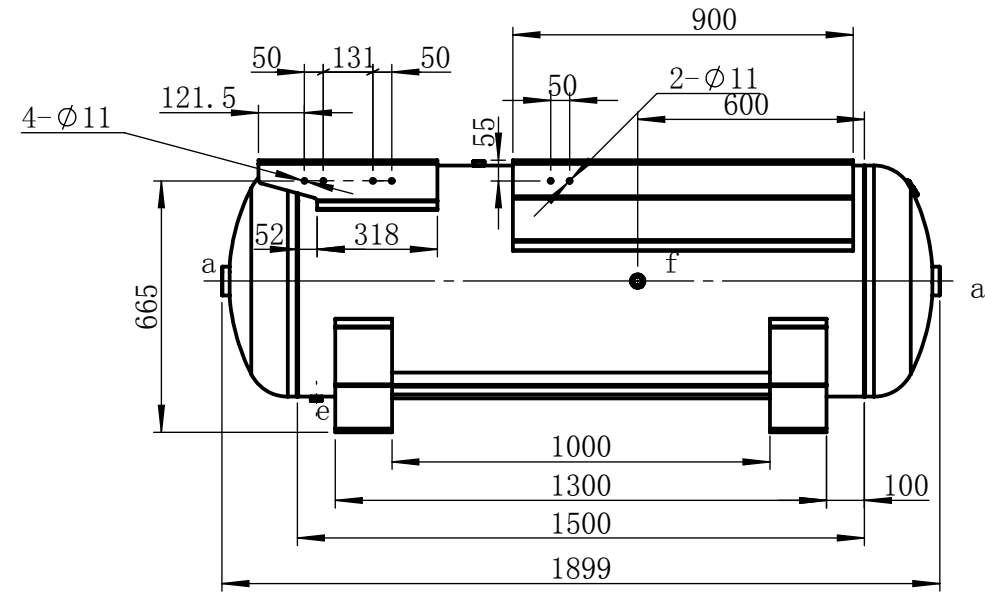
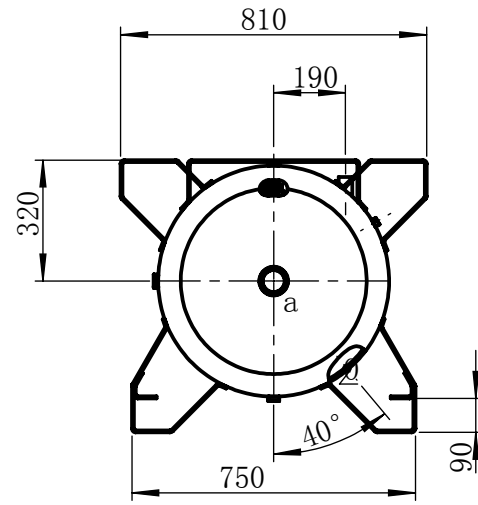
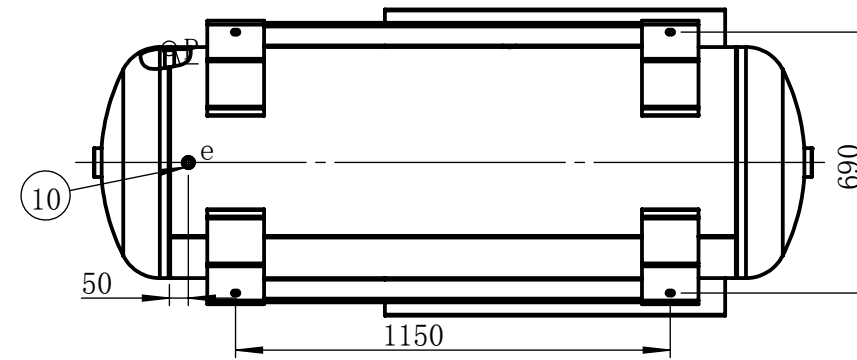
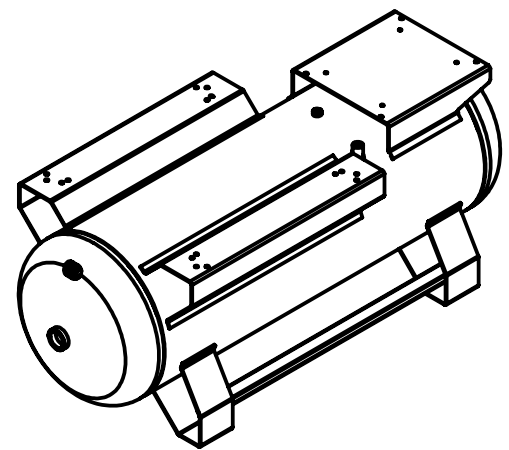


EM7W050012501

| Port | Port Name | Thread |
|------|----------------|--------|
| a | Inspection | Rc2 |
| b | Air Inlet | Rc3/4 |
| c | Safety Valve | Rc1/2 |
| d | Pressure Gauge | Rc1/4 |
| e | Drain | Rc1/2 |
| f | Air Outlet | Rc3/4 |



Assembly size: L*W_4*φ1
 15/20HP (PM): 750*700_4*φ12
 15/20HP Belt driven:700*750_4*φ12
 10HP (PM): 700*610_4*φ12
 10HP Belt driven:650*600_4*φ12



| Design Specification | | |
|------------------------------|-----|---------|
| Max Working Pressure Ps | Bar | 12.5 |
| Testing Pressure Ph | Bar | 18.8 |
| Max Working Temperature Tmax | °C | 100 |
| Min Working Temperature Tmax | °C | -10 |
| Medium | | Air |
| Volume Capacity | L | 500 |
| Kc/Ks Efficiency | | 1.0/1.0 |
| Corrsion Allowance | mm | 0.5 |

| Description | | | | | | | | Code Number | |
|-------------|-----|-----------|------|------|-------|---------|-----|---------------|-------|
| 500_tank | | | | | | | | EM7W050012501 | |
| | | | | | | | | Material | |
| Mark | QTY | File No. | Sign | Date | Trail | Product | QTY | Weight | Scale |
| Designer | | Versions | 01 | | | | 1 | | 1:20 |
| Controller | | Judgement | | | | | | | |
| Check | | Date | | | | | | | |

