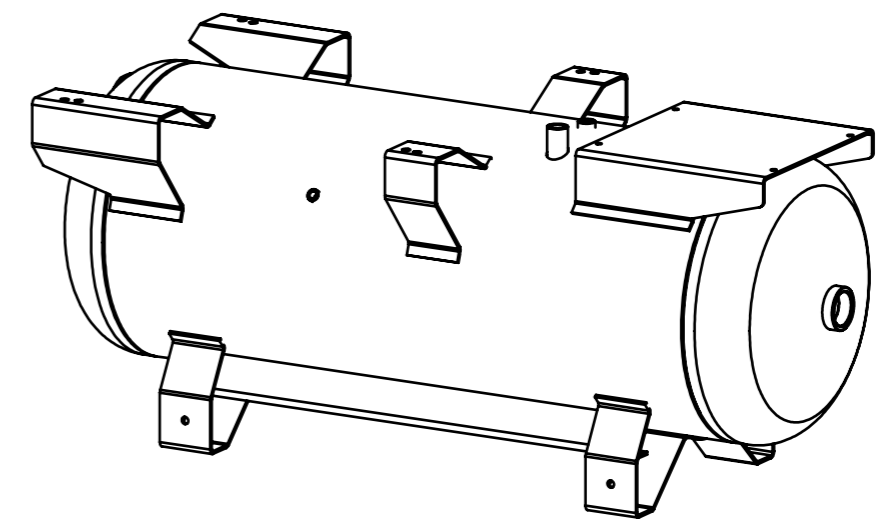
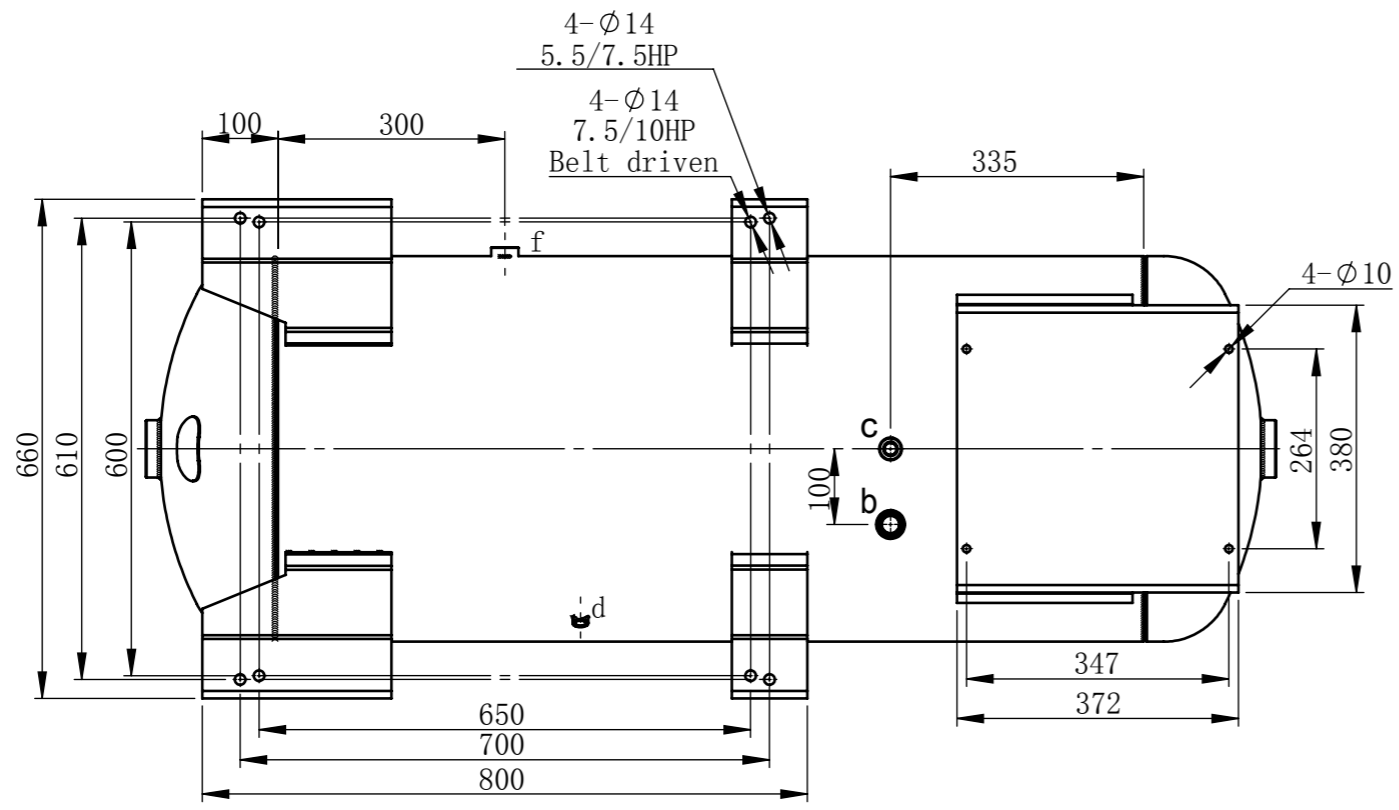


Port	Nom	Thread
a1-a2	Inspection	Rc2"
b	Entrée d'air	Rc3/4"
c	Soupape	Rc1/2"
d	Manomètre	Rc1/4"
e	Purge	Rc1/2"
f	Sortie d'air	Rc3/4"

Design Specification		
Pression MAX	bar	12.5
Pression d'épreuve	bar	18.8
Temperature MAX	°C	100
Temperature MINI	°C	10
Classe		Air G2
Capacité	L	270
Kc/Ks Efficacité		1.0/1.0
Surépaisseur de corrosion	mm	0.5



Mark		QTY	File No.	Sign	Date	Description		
						Cuve 270L horizontal		
Designer		Versions	00	Trail	Product	QTY	Weight	Scale
Controller		Judgement				1		1:10
Check		Date						

